

Green & Healthy Homes Initiative

Lewiston-Auburn

October 13, 2015

Green & Healthy Homes Initiative

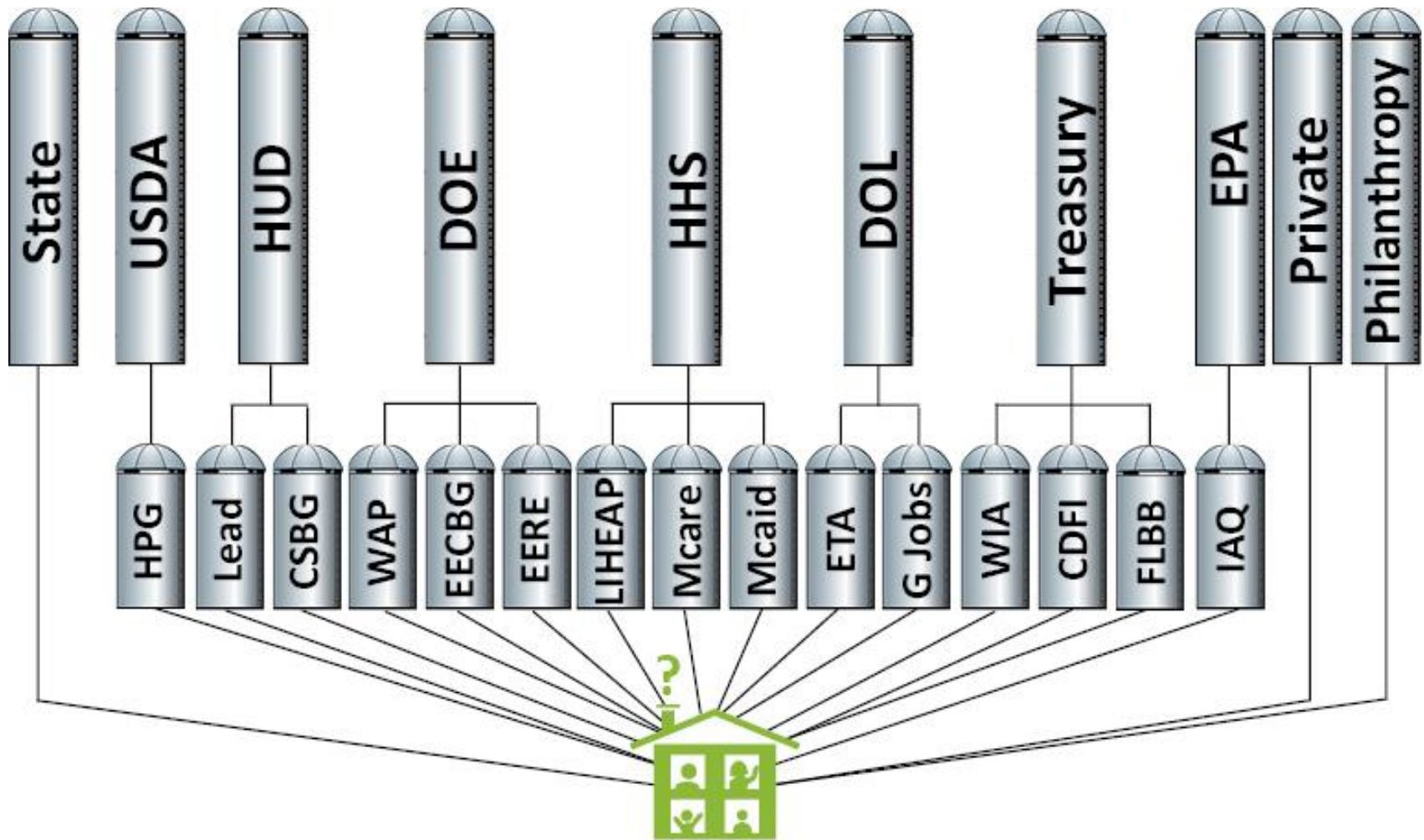
Breaking the link between unhealthy homes and unhealthy families.

A comprehensive approach for integrated health, safety, lead hazard reduction, energy efficiency, and weatherization interventions in low to moderate income homes.

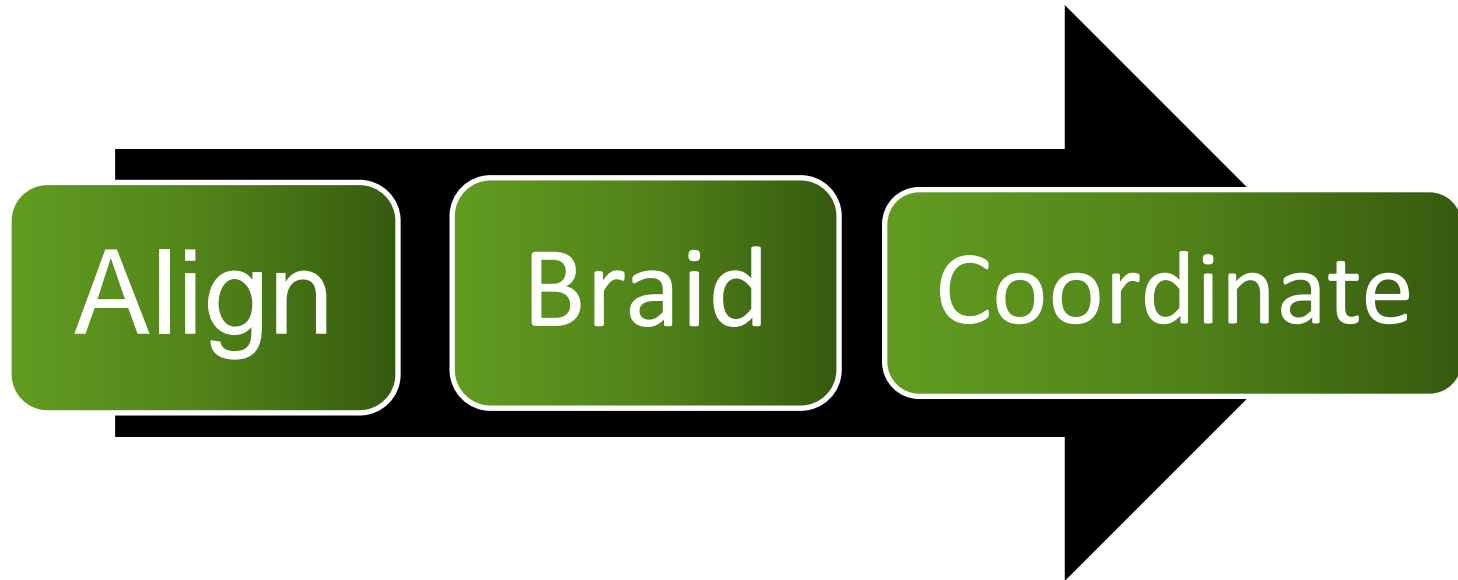
The Burden of Unhealthy Housing in the United States

- 6 million families live in substandard, unhealthy homes.
- Taxpayers lose billions every year due to inefficient and unhealthy housing conditions - 3 % of U.S. health care costs.
- \$43.4 billion due to lead poisoning - 535,000 Children – 1 in 38
- Asthma related home-based environmental health hazards cost over \$8 billion/year and lead to 14 million missed school days.
- Trip and fall injuries for seniors cost taxpayers over \$19 billion per year - projected to soar to over \$30 billion by 2020.
- Low income households spend 14% of income on energy compared with only 3.5% for other households.

A Fractured Delivery System

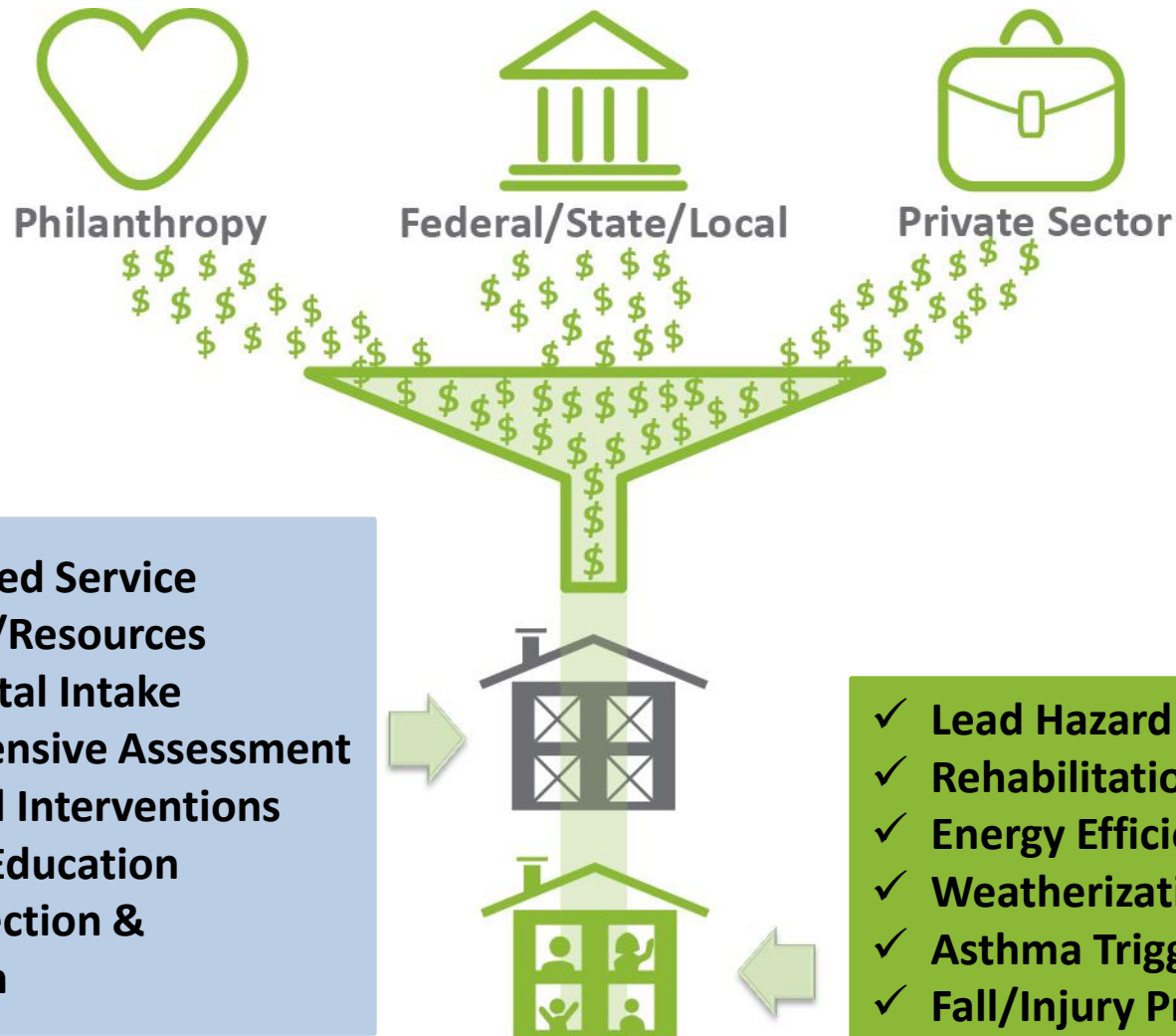


How does it work?



The A B C's of the GHHI Approach

The “No Wrong Door” Model



GHHI Goals

- ✓ Measurable improvements in health, economic and social outcomes
 - Fewer missed school days (children)
 - Fewer missed work days (parents)
 - Energy efficiency → energy cost savings
 - Medical cost savings
- ✓ Creation of sustainable green and healthy homes in low- to moderate-income neighborhoods
- ✓ Government innovation in service delivery
- ✓ Community-based green jobs and trainings
- ✓ Recommendations for new standards, policies and practices

Lewiston-Auburn

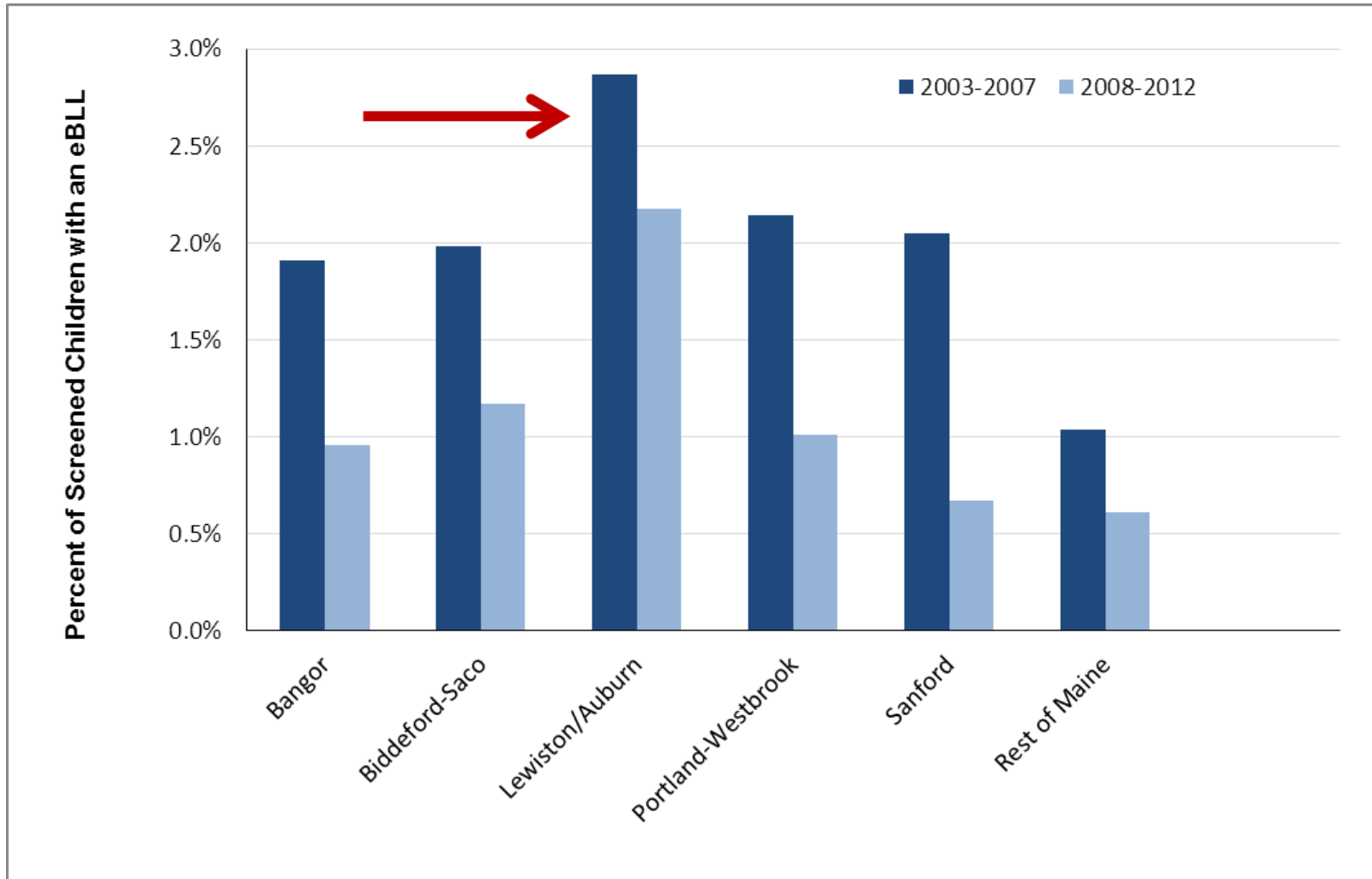


- Aging housing stock, pre-1978
- Multi-family, rental units
- In Lewiston, 90% of child lead poisonings occur in rental properties located primarily in the downtown area

Challenges in L-A

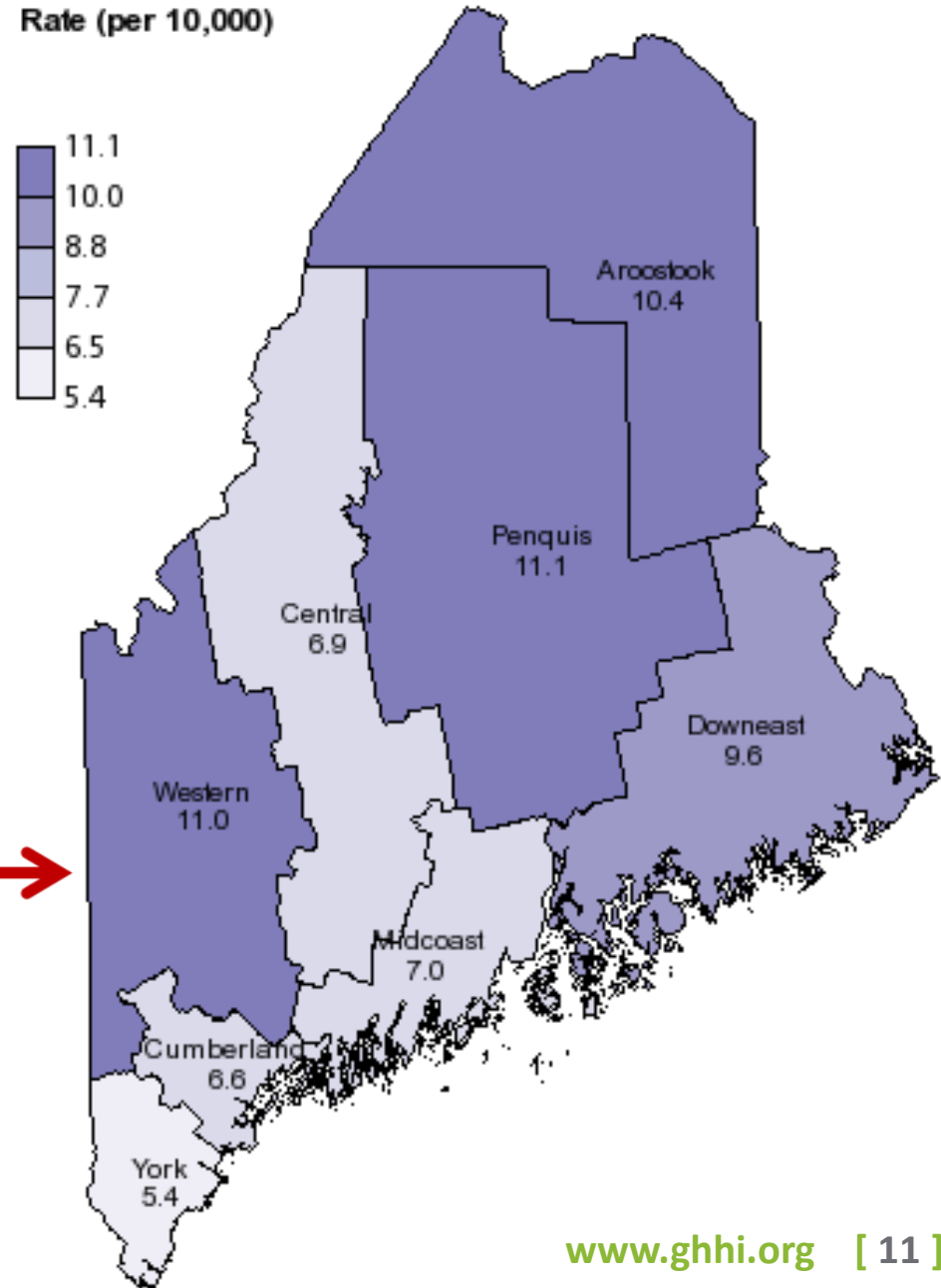
- 14.3% of Auburn residents below poverty level (2011 Census)
- 20.5% of Lewiston residents below poverty level (2011 Census)
- 6.7% Lewiston-Auburn unemployment (July 2013)
- 20.6%: Language other than English spoken at home
- Out of state landlords

Childhood Lead Poisoning: An Outlier

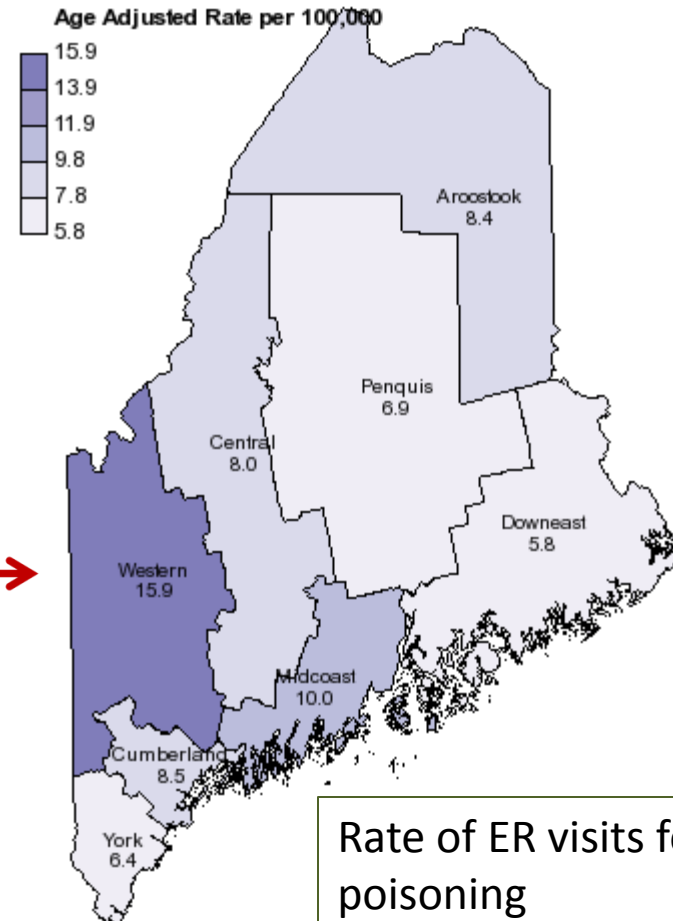
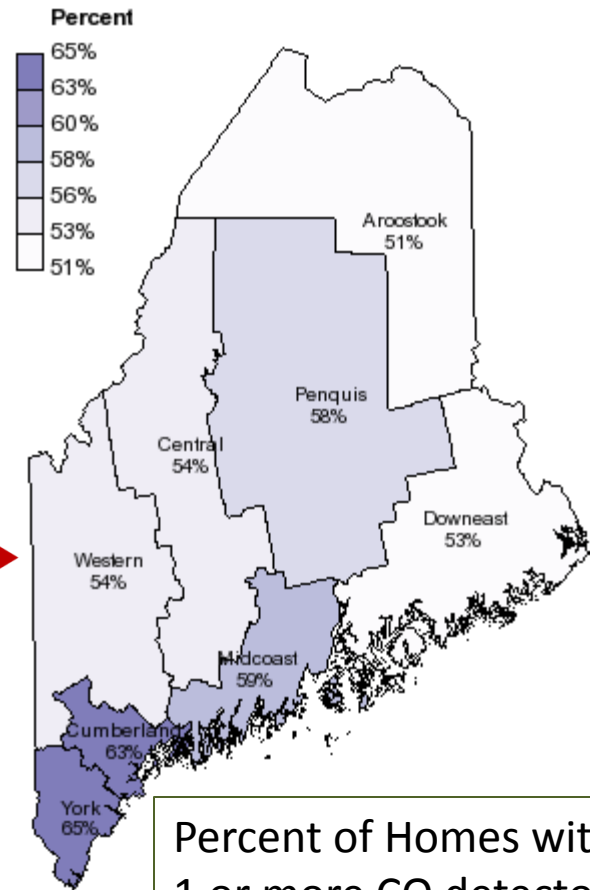


Asthma

Age-adjusted rate of asthma hospitalizations by public health district (2008)



Carbon Monoxide



Collaboration of Partners

Working together to help Maine families

- City of Lewiston
- City of Auburn
- Community Concepts, Inc.
- Healthy Androscoggin
- John T. Gorman Foundation
- St. Mary's Hospital
- Central Maine Medical Center
- Androscoggin Head Start
- Western Maine Community Action
- John T. Gorman Foundation
- Maine Affordable Housing Coalition
- Maine CDC
- Maine DEP
- Maine Weatherization Programs
- Bates College
- Neighborhood Housing League
- Seniors Plus
- Pine Tree Legal
- United Ambulance
- Lewiston Housing Authority
- Auburn Housing Authority
- Maine State Housing Authority

National Outcomes

5,000+ GHHI units completed

- 66-70% reduction in asthma-related hospitalizations
- 50% increase in not visiting the doctor's office for asthma episodes
- 62% increase in perfect attendance (0 absences due to asthma)
- 88% increase in not missing work for child's asthma episodes
- \$404 average annual reduction of energy costs
- Up to 20-25% decrease in costs to government programs
- 1,100+ persons trained for the Green & Healthy Homes Workforce with a \$4K - \$8K increase in wages

Katie Boss
Green & Healthy Homes Initiative
kboss@ghhi.org
207-330-7895



**Green & Healthy
Homes Initiative®**
Lewiston Auburn