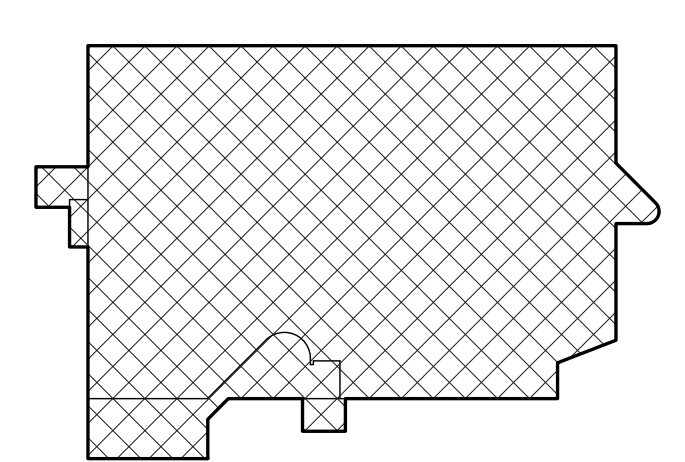


**MAINE HOUSING OFFICES**

AUGUSTA, MAINE

Harriman Project No. 18328

Key Plan



**GENERAL NOTES**

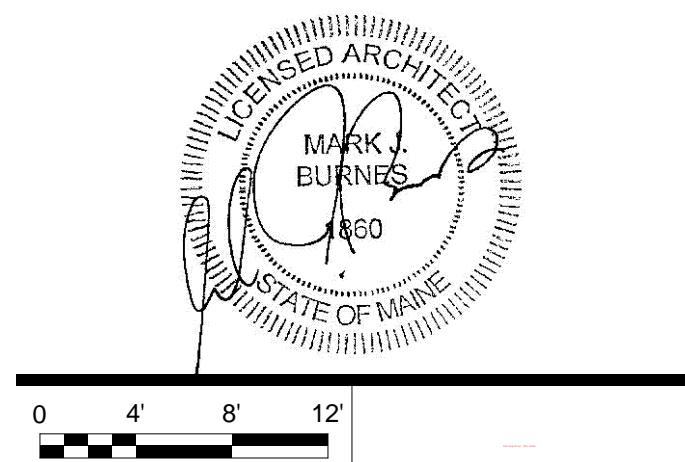
- SEE DRAWINGS A11.1 - A11.8 FOR INTERIOR DIMENSIONS, PARTITION TYPES AND ADDITIONAL DETAILED INFORMATION. REFER TO THIS PLAN FOR MATCHLINE LOCATIONS.
- SEE DRAWING A40.1 FOR PARTITION TYPES
- SEE DRAWING A60.1 FOR DOOR SCHEDULE.
- SEE DRAWING A61.1 FOR ROOM FINISH SCHEDULE.
- SEE EXTERIOR ELEVATIONS ON DRAWINGS A20.1 & A20.2 FOR WINDOW TYPES.
- PROVIDE CONTROL JOINTS IN GPDW PARTITIONS AT A MAX SPACING OF 30'-0" UNLESS NOTED OTHERWISE. MAX SPACING AT ABUSE GPDW IS 28'-0" UNDO LOCATE AT EDGE OF DOOR FRAME UP TO CEILING WHERE PRACTICAL. REVIEW LOCATIONS WITH THE ARCHITECT.
- SEE DRAWING A12.1 FOR EQUIPMENT INFORMATION AT TOILET ROOMS.

**SYMBOLS LEGEND**

- PARTITION TAG SEE A40.1 FOR PARTITION TAG KEY & PARTITION DEFINITION DETAILS
- ROOM NAME ROOM NAME AND NUMBER SEE A61.1 FOR SCHEDULE
- DOOR & BORROWED LITE NUMBERS SEE A60.1 FOR SCHEDULE
- MISCELLANEOUS ITEMS MARKER SEE SCHEDULE ON A80.1
- KEY FOB READER  
B-BATTERY POWERED  
H-HARD WIRED

Issues and Revisions

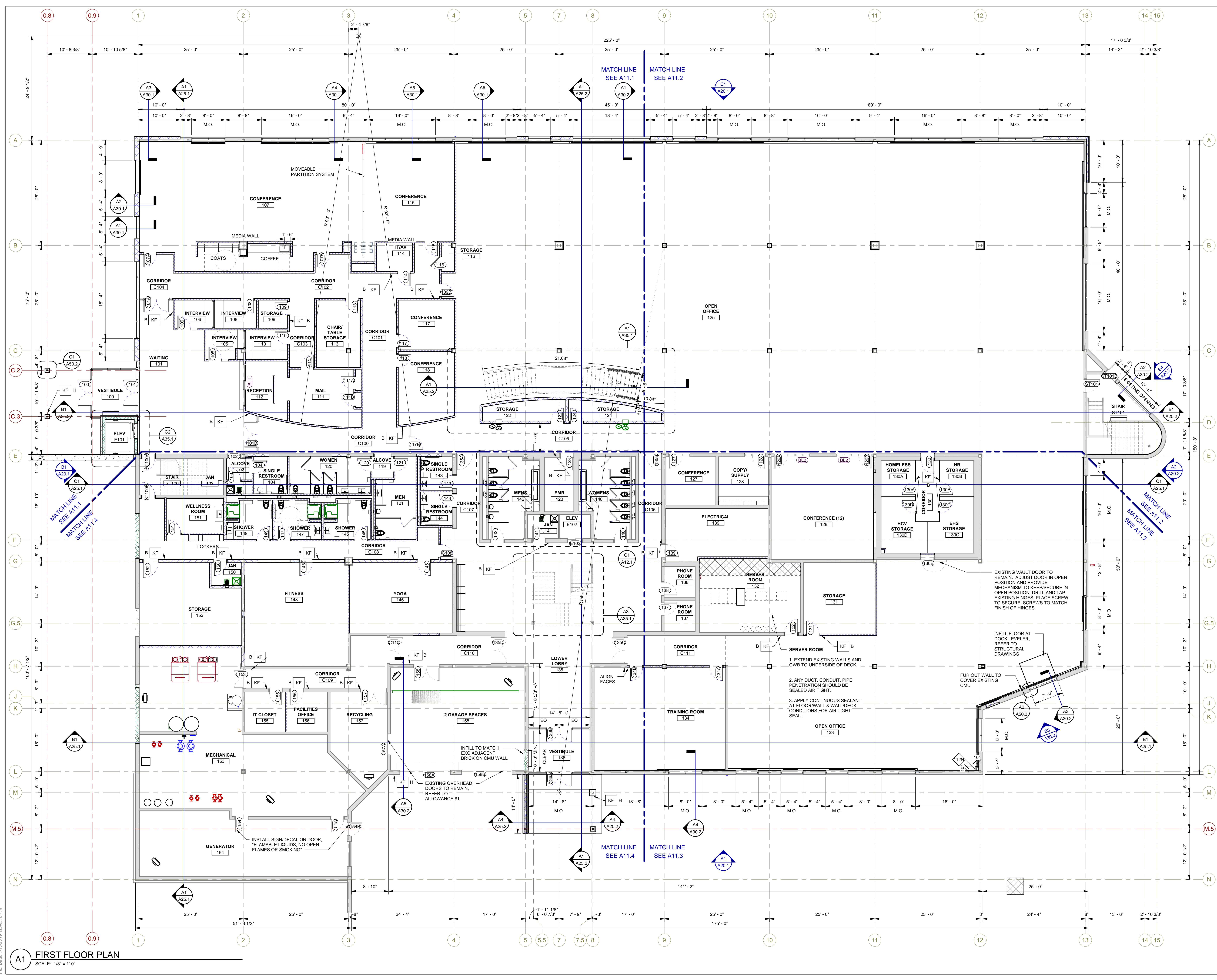
Date	Description
06-08-18	SCHEMATIC REVIEW
10-02-18	DESIGN DEVELOPMENT
01-11-19	CONSTRUCTION DOCUMENTS



PA/PE: MJB © 2019  
Drawn By: MMO Harriman Associates

**FIRST FLOOR PLAN**

**A10.1**



**A1 FIRST FLOOR PLAN**  
SCALE: 1/8" = 1'-0"

Plot Date: 1/10/2019 12:40:18 PM

BOOSTER ACTUATOR  
PART NO. 428949

**CAUTION**

BOOSTER ACTUATOR IS ROCKET AND PIN IS FLUSH  
WITH THE HOUSING. WHEN IN THE ARMED POSITION  
THE PINS ARE FULLY EXTENDED (APPROXIMATELY 300 INCH)  
FROM THE TOP OF THE BODY.



LAB. NO. 4281

50

# CLEAN AGENT EXTINGUISHING SYSTEM UNIT



- 200 CU. Ft. (6 m<sup>3</sup>) INERGEN<sup>®</sup>
- 250 CU. Ft. (7 m<sup>3</sup>) INERGEN<sup>®</sup>
- 350 CU. Ft. (10 m<sup>3</sup>) INERGEN<sup>®</sup>

- 425 CU. Ft. (12.0 m<sup>3</sup>) INERGEN<sup>®</sup>
- 435 CU. Ft. (12.3 m<sup>3</sup>) INERGEN<sup>®</sup>

**CAUTION**  
 INERGEN AGENT DOES NOT CONTAIN OXYGEN. DO NOT UTILIZE INERGEN AGENT AS A DIRECT BREATHING GAS. DISCHARGE OF INERGEN AGENT INTO A CONFINED SPACE WILL LOWER THE OXYGEN CONCENTRATION.  
 TO AVOID ACCIDENTAL SYSTEM ACTUATION AND DISCHARGE, ENSURE THAT ALL ACTUATOR LEVERS ARE IN THE RESET POSITION (PIN FULLY RETRACTED) BEFORE INSTALLATION AND AFTER EACH ACTUATION.

**CAUTION**  
 CONTENTS UNDER HIGH PRESSURE. MAKE CERTAIN SHIPPING CAP IS INSTALLED WHEN SHIPPING OR HANDLING UNSECURED CYLINDER. FAILURE TO COMPLY MAY RESULT IN PERSONAL INJURY OR PROPERTY DAMAGE DUE TO VIOLENT CYLINDER MOVEMENT IF UNLATCHED OR DAMAGED.

**CONTENTS**  
 INERGEN GAS (52% NITROGEN, 40% ARGON, 8% CARBON DIOXIDE) PRESSURIZED TO 2175 PSI AT 70 °F (150 bar AT 21 °C).

**INSTALLATION**  
 THIS SYSTEM IS MADE UP OF UNITS TESTED WITHIN LIMITATIONS CONTAINED IN THE DETAILED INSTALLATION MANUAL.  
 WHEN INSTALLING ACTUATORS ON PILOT CYLINDERS, ENSURE THAT ALL ACTUATOR LEVERS ARE IN THE RESET POSITION (PIN FULLY RETRACTED). SEE INSTALLATION INSTRUCTIONS FOR MORE DETAIL.

**RECHARGE**  
 RECHARGE CYLINDERS IMMEDIATELY AFTER DISCHARGE. CYLINDERS MUST BE RETURNED FOR RECHARGE TO AN AUTHORIZED ANSUL INERGEN SYSTEM DISTRIBUTOR. ENSURE THAT SHIPPING CAP IS IN PLACE ON CYLINDER BEFORE TRANSPORTING. REMOVE ALL ACTUATORS AND RETURN ACTUATOR LEVERS TO THE RESET POSITION (PIN FULLY RETRACTED) BEFORE REINSTALLING.

**MAINTENANCE**  
 CYLINDER SHOULD HAVE PRESSURIZATION LEVEL CHECKED SEMI-ANNUALLY. IF CYLINDER SHOWS A LOSS IN PRESSURE EXCEEDING 2% (200 PSI OR LESS) (142.5 bar) AT 70 °F (21 °C), THE CYLINDER MUST BE REFILLED OR REPLACED. FOR TEMPERATURES OTHER THAN 70 °F (21 °C), REFER TO MANUAL PART NO. 416655.

INERGEN FIRE SUPPRESSION SYSTEM IS DESIGNED TO OPERATE BETWEEN 32 AND 130 °F (0 AND 54 °C).  
 THE SYSTEM SHOULD BE PERIODICALLY INSPECTED BY TRAINED PERSONNEL. THE SYSTEM DESIGNER MUST BE CONSULTED WHENEVER CHANGES ARE PLANNED FOR THE SYSTEM OR AREA OF PROTECTION, OR AFTER A DISCHARGE OR FIRE SITUATION.  
 TO BE INSTALLED, INSPECTED, MAINTAINED, AND TESTED IN ACCORDANCE WITH STANDARDS OF THE NATIONAL FIRE PROTECTION ASSOCIATION ENTITLED "NFPA 2001, CLEAN AGENT FIRE EXTINGUISHING SYSTEMS" AND ANSUL INSTALLATION AND MAINTENANCE MANUAL, PART NO. 416655, OR ANSUL MARINE INSTALLATION AND MAINTENANCE MANUAL, PART NO. 426343.

IF CONTAINER CONTENTS MUST BE REMOVED FOR SERVICE, MAINTENANCE OR DISMANTLING OF THE CLEAN AGENT SYSTEM - PRIOR TO REMOVAL, CONTACT YOUR LOCAL INSTALLER OR MANUFACTURER FOR INSTRUCTIONS CONCERNING THE EQUIPMENT AND THE CLEAN AGENT.

DO NOT COVER, REMOVE OR DEFACE THIS LABEL.

USCG APPROVAL NO. 162.162-1-0

MONTH AND YEAR OF MANUFACTURE LOCATED ON VALVE.

CYLINDER TESTED TO 60 MARKED DOT SERVICE PRESSURE.

HYDROSTATICALLY TEST CYLINDER TO CTC REQUIREMENTS AT INTERVALS NOT EXCEEDING 20 YEARS, 5 YEARS IF DISCHARGED.

**HMS**  
 INERGEN GAS (52% NITROGEN, 40% ARGON, 8% CARBON DIOXIDE) HMS 1-6-G/VERY COLD DISCHARGE. CONTENTS UNDER HIGH PRESSURE.

**HMS**  
 MSDS AVAILABLE AT [www.ansul.com](http://www.ansul.com)

## POST FIRE WARNING AVOID EXPOSURE TO VAPORS, FUMES AND PRODUCTS OF COMBUSTION

**ATTENTION**  
 D'EMERGEN NE CONTIENT PAS D'OXYGENE. NE PAS UTILISER D'EMERGENE POUR RESPIRER DIRECTEMENT. TOUTE DECHARGE D'EMERGENE DANS UN LIEU CONFINE ABAISSERA LA CONCENTRATION D'OXYGENE.  
 POUR EVITER TOUT DECLENCHEMENT ACCIDENTEL DU SYSTEME, VERIFIER SI TOUS LES LEVIERS DE DECLENCHEMENT SONT EN POSITION RESET (FERMEZ A ZER0) AVEC LA GOUPILLE COMPLETEMENT RETRACTEE AVANT L'INSTALLATION ET APRES CHAQUE DECLENCHEMENT.

**ATTENTION**  
 NE PORTER SOUS PRESSION. VERIFIER SI LE CAPUCHON DE TRANSPORT EST EN PLACE LORSQUE VOUS TRANSPORTEZ OU MANIPULEZ UN CYLINDRE NON FIXE. TOUT BRULURE OU AUTRE CAUSE POUVE LE DECLENCHEMENT OU LA RUPTURE DE LA VANCE.  
**CONTENTS**  
 D'EMERGENE (52% DE NITROGENE, 40% D'ARGON, 8% DE DIOXYDE DE CARBONE) SOUS PRESSION A 150 BARS A 21°C (2175 PSI A 70°F).

**INSTALLATION**  
 CE SYSTEME EST CONSTITUE D'UNITE TESTEE DANS DES CONDITIONS SPECIALES DONT LES DETAILS FIGURENT DANS LE MANUEL D'INSTALLATION LORSQUE VOUS RETRACTEZ LA GOUPILLE COMPLETEMENT SUR LES CYLINDRES PILOTE. VERIFIER SI TOUS LES LEVIERS DE DECLENCHEMENT SONT EN POSITION RESET (FERMEZ A ZER0) AVEC LA GOUPILLE COMPLETEMENT RETRACTEE. POUR PLUS DE DETAILS, SE REPORTER AUX INSTRUCTIONS D'INSTALLATION.

**RECHARGE**  
 RECHARGEZ LES CYLINDRES IMMEDIATEMENT APRES TOUTE DECHARGE. POUR TOUTE RECHARGE, LES CYLINDRES DOIVENT ETRE ENVOYES CHEZ UN DISTRIBUTEUR INERGENE. VERIFIER SI LE CAPUCHON DE TRANSPORT EST EN PLACE AVANT DE TRANSPORTER. RETIRER TOUS LES DECLENCHEURS ET METTRE TOUS LES LEVIERS DE DECLENCHEMENT EN POSITION RESET (FERMEZ A ZER0) AVEC LA GOUPILLE COMPLETEMENT RETRACTEE AVANT LA REINSTALLATION.

**ENTRETIEN**  
 LA PRESSION DE CHAQUE CYLINDRE DOIT ETRE CONTROLEE UNE FOIS TOUTS LES SIX MOIS, SI LA PERTE DE PRESSION DEPASSE LES 2% (200 PSI OU MOINS) A 21°C (70°F). LE CYLINDRE DOIT ETRE RECHARGE OU REMPLACÉ POUR LES TEMPERATURES SUPERIEURES A 21°C (70°F). SE REPORTER A LA PAGE 210 DU MANUEL D'INSTALLATION.  
 LE SYSTEME DOIT ETRE RECHARGE OU REMPLACÉ A ETE CONCLU POUR UN D'EMERGENE (52% DE NITROGENE, 40% D'ARGON, 8% DE DIOXYDE DE CARBONE) SOUS PRESSION A 150 BARS A 21°C (2175 PSI A 70°F).

WARRANTY  
VOID  
IF SEAL IS  
BROKEN  
SEE INSTRUCTIONS  
FOR PROPER USE

ANSUL



LISTED  
2956

FM  
CV-98

