

1050 People Homeless in Maine on January 25, 2012

Annual Point in Time Survey

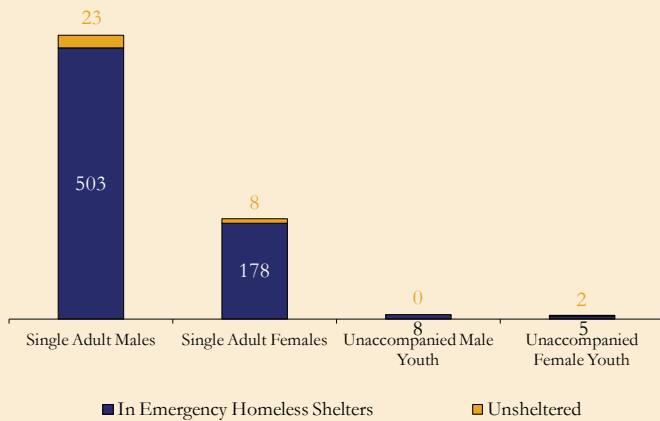
Where People Stayed	People Identified as Homeless	Survey Respondents	Survey Response Rate
In Emergency Homeless Shelters	1017	932	91.6%
Unsheltered*	33	20	60.6%
Total	1050	952	90.7%

*Unsheltered includes people who were staying in cars, tents, abandoned buildings, outside or in other places not suitable for human habitation.

People Identified as Homeless:

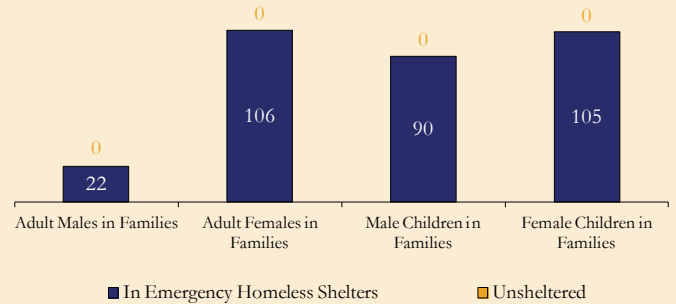
Individuals

n=727



Families

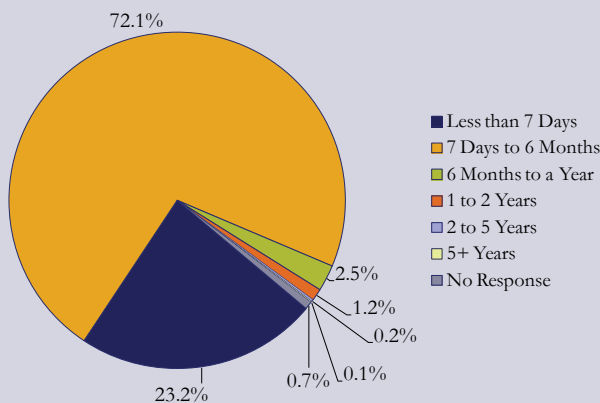
n=323



Survey Results:

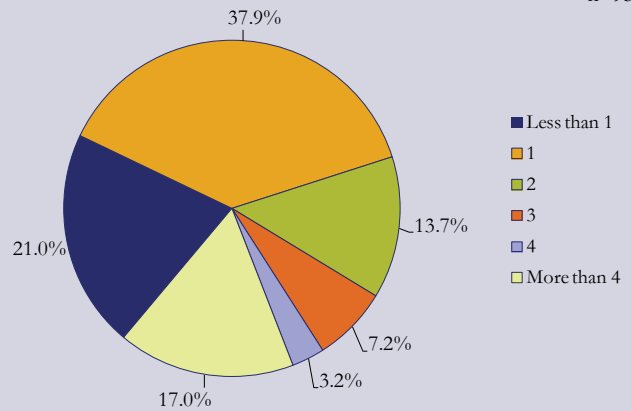
Length of Time Homeless

n=952



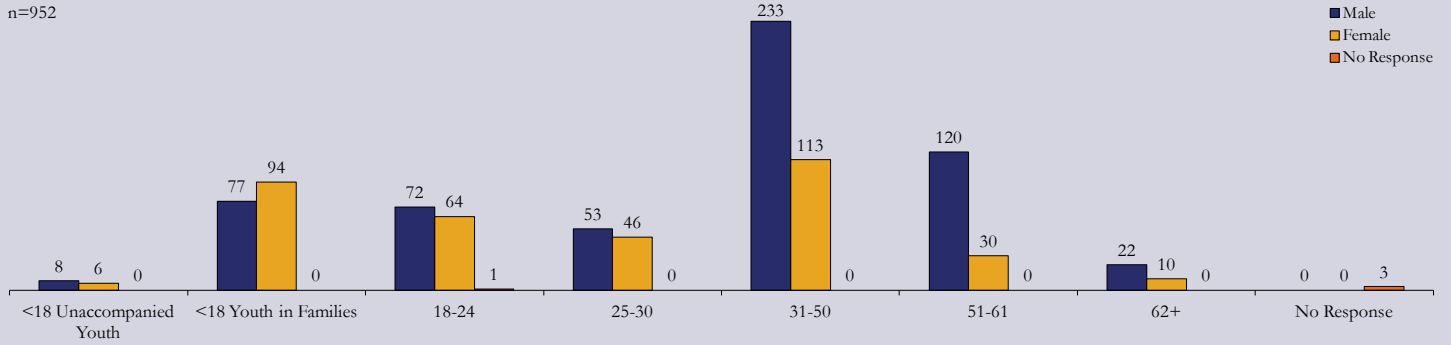
Times Homeless** in the Past Three Years

n=952

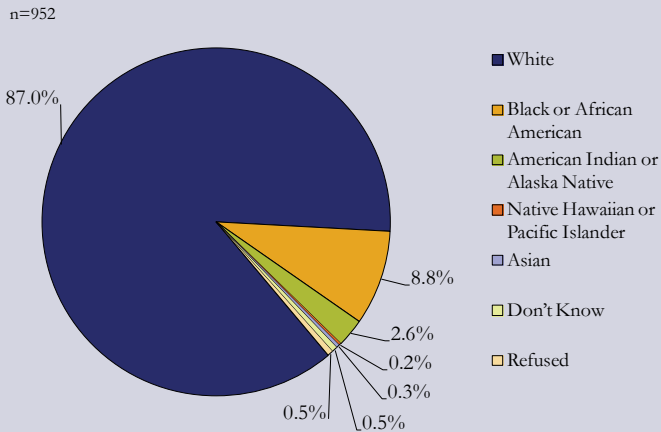


** Under the HEARTH Act, the new definition of a "time homeless" (or in HUD terms an "occurrence" of homelessness) is that the occurrence must be at least 15 consecutive days long. Clients who were not homeless for at least one "occurrence" of 15 continuous days are still considered to have experienced homelessness, but are now counted in the "Less than 1" time homeless category above.

Gender and Age

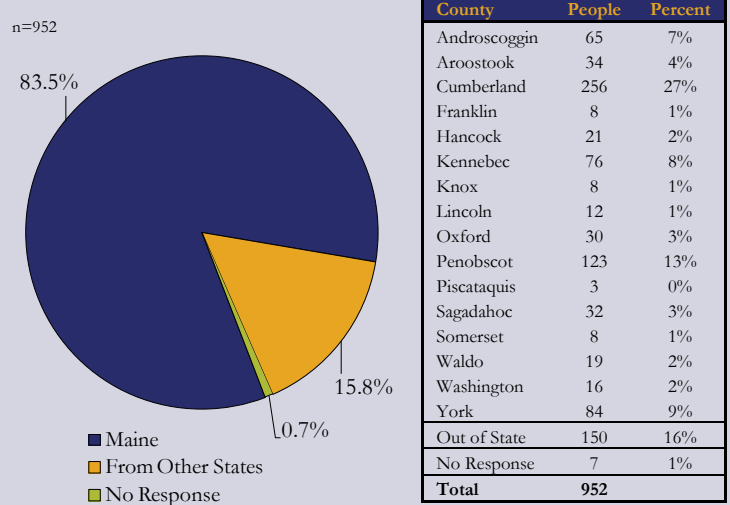


Racial Make-Up



114 (12%) people identified through the survey were minorities. Minorities are 4% of Maine's population.

Last Residence



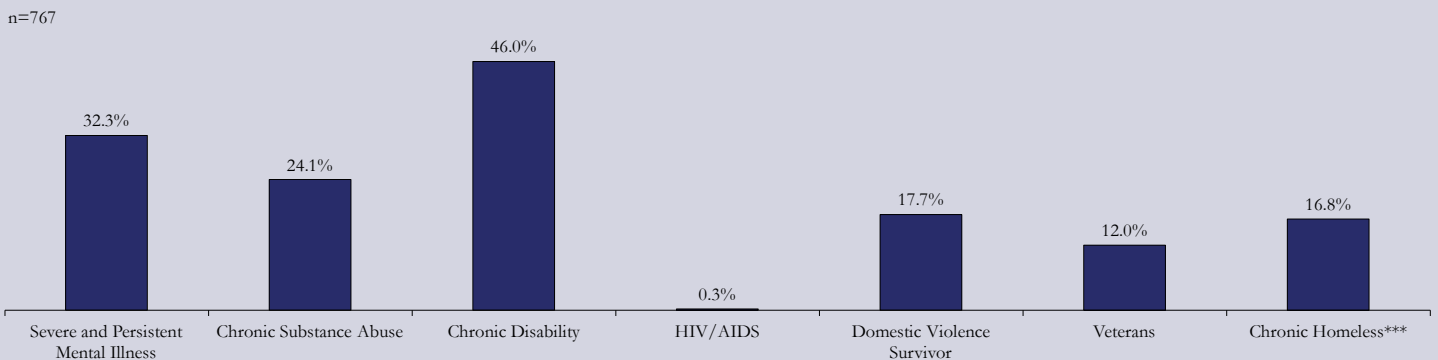
Adult Education Levels

215 (28%) Less than High School
 370 (48%) High School Education
 140 (18%) More than High School
 42 (5%) No Response

Adult Employment Status

51 (7%) Employed
 638 (83%) Unemployed
 78 (10%) No Response

Additional Information on Adults



129 (16.8%) adult survey respondents met the definition of chronically homeless: an unaccompanied homeless adult individual with a disabling condition who has either been continuously homeless for a year or more or has had at least four episodes of homelessness in the past three years. Please go to <http://www.ich.gov/> for more information.

*** The chronic count changed primarily as a result of HUD's proposed re-definition of a "time homeless" or "occurrence" of homelessness, as described above.

About the Survey: The Annual Point in Time Survey provides a snapshot of people experiencing homelessness on a particular night of the year. The survey is required by the U.S. Department of Housing and Urban Development for Continuums of Care to receive McKinney-Vento funds for Transitional and Permanent Supportive Housing.

On January 25, 2012, service providers, homeless advocates and municipal officials from the Continuums in Maine conducted a statewide census of people staying in Emergency Shelters and Transitional Housing for people who are homeless, and those living on the streets or in places considered unfit for habitation (unsheltered). Demographic information, homeless situations and service needs were recorded, whenever possible.

Because Maine's three Continuums of Care (City of Portland, Greater Penobscot County, and Maine Balance of State) recently merged into two (City of Portland, and Maine Continuum of Care), this year's results are reported using the new definitions. For data from prior years, go to www.mainehousing.org/data-reports/Housing-Reports.